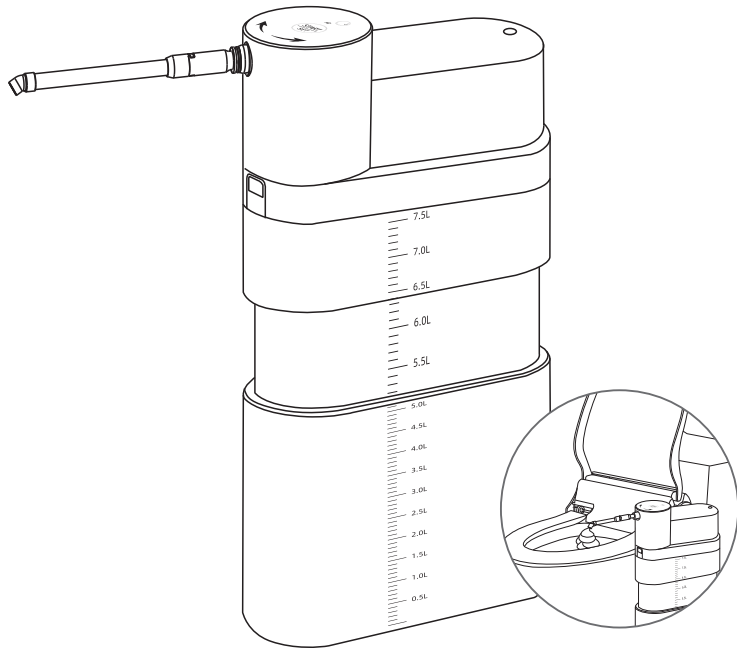


Instruction Manual

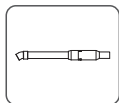
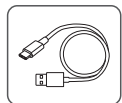
FoamShield

(shields from splashes, odors, smears, spreading of bacteria, embarrassments)

can be used when urinating or defecating



4. Accessories Included



USB to Type-C conversion cable × 1
(Convert a regular 5V/1.5A adapter plug of a mobile phone to a Type-C plug)

Spray Rod (including foamer) × 1

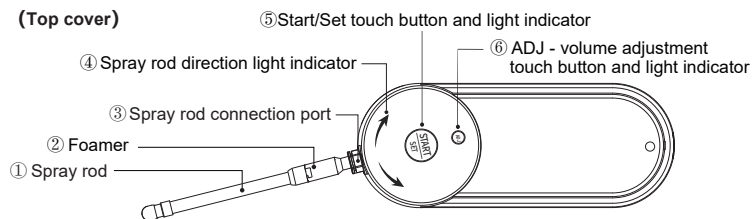
Effervescent Tablets × 3

Filter Screen × 2 (spare)

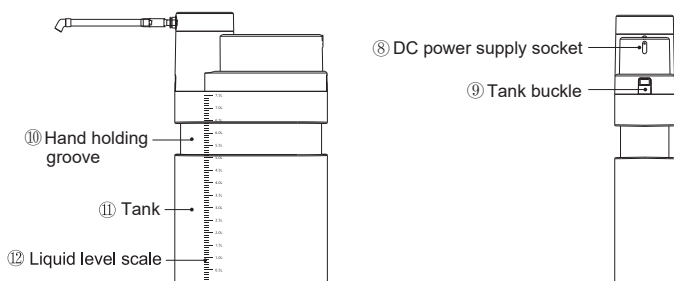
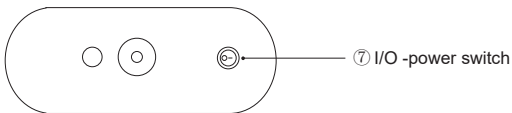
Instruction Manual

5. Appearance introduction

(Top cover)



(Bottom view of top cover)



1. Use

Place "FoamShield" on the floor by any of the rear side of toilet. Before using toilet, operate "FoamShield" to spray thick foam on the toilet water surface to prevent dirty water splashing, unpleasant odors spreading, feces smearing the toilet wall, bacteria spreading during flushing, providing a pleasant using environment for the next toilet user to avoid social embarrassment.

2. Product Features

1. Suitable for all kinds of diluted soap liquids (no particles), or soap liquids produced from concentrated soap effervescent tablets.
2. The electric spray rod automatically performs positioning, spraying, and homing.
3. The spray rod has no contact with the toilet, which is clean and hygienic.
4. The direction of the spray rod can be selected, which can meet any space needs.
5. Two motors, double the spraying speed.
6. "setting lock" function can prevent the "set function" from being changed by mistaken touch.
7. Multi-stage spray volume adjustment, dosage controllable.
8. Large capacity, no need to refill frequently.
9. Rechargeable, can be used after charged or directly plug in to use.
10. Low power warning to remind recharging.

3. Technical Parameters

Power Supply	7.4V/2000mAh rechargeable lithium battery (charging or direct plugging in to use)
Spraying Time	6s, 8s, 10s, 12s, 14s
Nozzle Height (from ground)	44cm around
Ambient Temperature for Operating	0.5°C~45°C
Maximum Capacity	7500ml
Net Weight	1.33kg / 2.93pounds
Dimension	264×104×470mm / 10.4×4.1×18.5inch

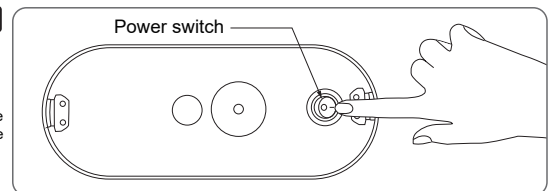
6. Operation steps

Step 1.

Turn on the power

The product has been charged a small amount before leaving the factory. It is recommended to perform a complete charge before first use. Please see step 7 for the charging method.

Note: Turn on the power switch before charging



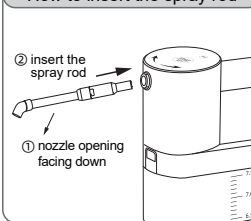
Step 2.

Install the spray rod

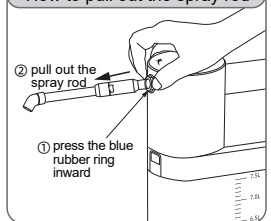
Align the spray rod with the spray rod connection port and insert it firmly. At the same time, turn the nozzle mouth downwards.

Note: If the spray rod needs to be pulled out, the blue rubber ring of the spray rod connection port should be pressed inward before the spray rod can be pulled out.

How to insert the spray rod



How to pull out the spray rod

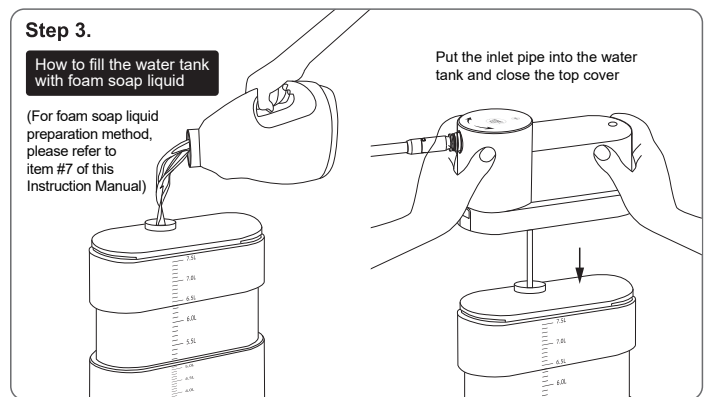


Step 3.

How to fill the water tank with foam soap liquid

(For foam soap liquid preparation method, please refer to item #7 of this Instruction Manual)

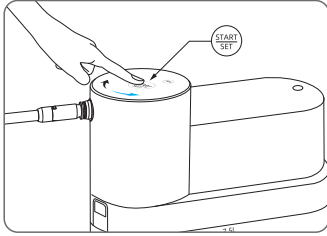
Put the inlet pipe into the water tank and close the top cover



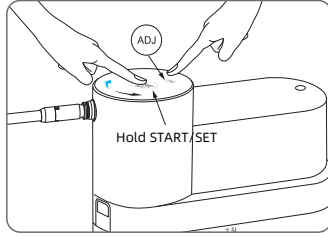
Step 4.

Spray rod steering setting

After holding the START/SET key for 3 seconds, the "Turn Indicator" will start blinking.



Each time the ADJ button is tapped, the "Turn Indicator" will change once.



user

If is placed on the left rear side of a toilet, set the spray rod in right turn direction.

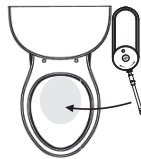
After the right turn direction is set, touch the START/SET key to activate the operation.



The spray rod turns right and starts to spray foam. After finish the spraying, the rod returns to its original position automatically.

If is placed on the right rear side of a toilet, set the spray rod in left turn direction.

After the left turn direction is set, touch the START/SET key to activate the operation.



The spray rod turns left and starts to spray foam. After finish the spraying, the rod returns to its original position automatically.

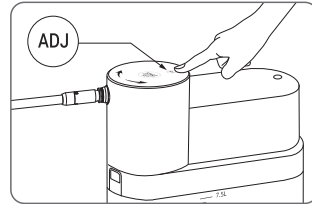
Tip: On the way to spray, press the START/SET key at any time to stop spraying, and the spray rod will automatically return to the original position directly. (This feature is useful to control the spray volume when urinating with "low foam volume requirement".)

Step 5.

Spray volume adjustment

There are five levels of adjustable liquid spray volume, and each time the ADJ button is lightly touched, the liquid spray volume can be increased by one level.

Light touch the ADJ button to cyclically adjust the spraying time to 6 seconds, 8seconds, 10 seconds, 12 seconds, and 14 seconds. The blue indicator flashes once, twice, three times, four times, and five times in sequence.



7. How to prepare foam soap liquid

You can use the included soap effervescent tablets to prepare it

1. Add water to the water tank, the amount of water can not exceed 80% of the tank.
2. Put the tablets in the water tank. (use one tablet per 2500ml of water)
3. Let stand for 30 minutes before use.

Note: (1) Effervescent tablets take a long time to dissolve completely.

- (2) If the effervescent tablet is put in the water tank first, it will create foam when water is subsequently added to impact the tablet; thus reducing the space available for more water filling.

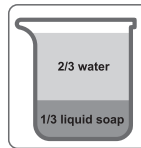
Use self-acquired effervescent tablets from market

Please refer to the manufacturer's instruction manual to produce soap liquid.

Use regular liquid soap to produce foam soap liquid

The mix ratio of liquid soap to water is about 1 : 2. Stir the mixed liquid well before pouring it into the tank.

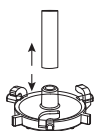
(This ratio is for reference only. Please adjust it according to the actual situation. If the output foam is too thick, you can add more water; if is too thin, you can add more liquid soap.)



8. Steps to clean the filter

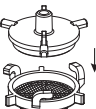
Step 1

Pull out the hose



Step 4

Put the filter back into the filter



Step 2

Turn the upper cover counterclockwise to open the filter



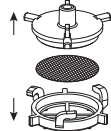
Step 5

Rotate the upper cover clockwise to lock the filter



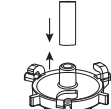
Step 3

Take out the filter and then clean with hot water



Step 6

Connect the filter to the hose



Step 6.

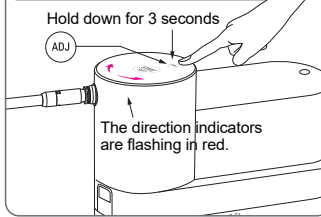
Locking function on and off

After the Locking function is turned on, only the START/SET key can be operated continuously, and the functions of other keys are invalid, so as to prevent the user from accidentally touching and changing the setting.

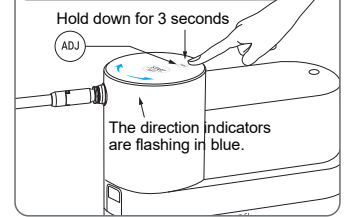
Turn on the Locking function: Long touch the ADJ button for 3 seconds, the two direction indicators flash red six times quickly, and enter the "Setting Lock" state.

Turn off the Locking function: Long touch the ADJ button for 3 seconds, the two direction indicators flash blue six times quickly, and exit the "locking" state.

Turn on the Setting Lock function



Turn off the Setting Lock function



Step 7.

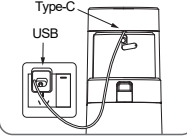
Low battery warning & how to charge

Low battery warning

Both direction indicators illuminated red to indicate that the battery is low and needs to be charged.

Charging cable connection

Use the included "USB to Type-C cable" to connect a mobile phone 5V-1.5A adapter and the DC power supply socket of the unit to charge. Note: Make sure the power switch is turned on before charging.



Charging indicator shows the status

under locked state

START/SET blue light and ADJ red light flashing alternately



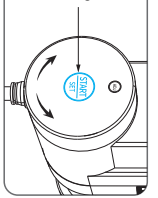
under unlocked state

START/SET blue light and ADJ blue light flashing alternately.



Fully charged condition

START/SET steady blue light

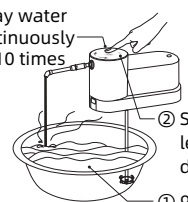


9. Steps to clean the foamer

- Step 1: Pour 90 degree hot water into a basin
- Step 2: Remove the main unit from the water tank and put the water inlet pipe into the hot water. Set the foam output time on the main unit to the longest at the fifth level.

- Step 3: Press the START button to start cleaning, and clean 10 times in a row.

③ Spray water continuously for 10 times



② Select the 5th level spray duration

① 90 degree hot water

10. Clean & Maintenance

Clean the unit	Clean the unit with a damp cloth.
Before storage	If the unit is not going to be used for a long time, it is recommended to clean the liquid outlet pipe before storage, so as to avoid the soap liquid in the pipe drying up and making it unusable in the future. (Cleaning method: Fill the tank with clean water, keep pressing the power button to spray liquid to clean the water pipe, then empty the tank and air-dry it for storage.)

11. Safety Precautions

- 11.1 Please keep the nozzle clean.
- 11.2 Please refill liquid in time to prevent the unit from working in a liquid-free state for a long time.

12. Troubleshooting

Faults	Causes	Solutions
The power indicator light is not on	1. The power switch is not turned on	Turn on the power switch at the bottom of the top cover
	2. Out of power	Charging or plugging in for use
Foam does not discharge smoothly	1. Filter or foamer clogged	Clean the filter (refer to item 8), clean the foamer (refer to item 9)
	2. Foam liquid is too thick	Dilute with water
Poor splash-proof effect of foam	Foam liquid is too thin	Add soap to thicken the liquid
Only air but no foam	1. Filter or foamer clogged	Clean the filter (refer to item 8), clean the foamer (refer to item 9)
	2. Too little foam soap liquid	Add more foam soap liquid